



**International Lithosphere Program
Coordinating Committee (2021-25)**

Lithosphere of East Antarctica

Chair:

Anya Reading, University of Tasmania

Co-Chairs:

Kate Selway, University of South Australia

Matt King, University of Tasmania

+ over 30 committee members

Objectives:

- Aim to promote new initiatives and best practice in lithosphere research for East Antarctica

Cooperation:

- Connect 'Lithosphere' and 'Antarctic' communities

Addressing the ILP Challenges:

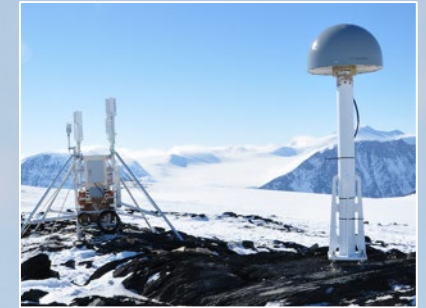
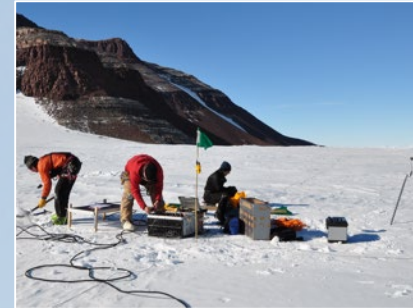
- Strengthen connection between solid-Earth and other research areas
- Strengthen impact of lithosphere research
- Challenging topics and integrated approaches
- Promote training of young researchers

Background:

- East Antarctica is the least-investigated area of continental lithosphere on Earth
- The Lithosphere (and asthenosphere beneath) interacts with ice sheets through feedbacks between coupled systems → sea level rise
- Promote international cooperation
 - Data-compilation and computer modelling
 - Field activities
 - Connecting researchers

1) Data Compilation / Computer Modelling:

2) Field Activities:



Geodesy
Magnetotellurics
Seismology
+
Airborne
Satellite



3) People:



EGU Splinter Meeting + Asynchronous Discussion

ILP Coordinating Committee for East Antarctica

SPM5 Thu, 27 Apr, 12:45-13:45 Rm 2.61

1 – Welcome and Overview

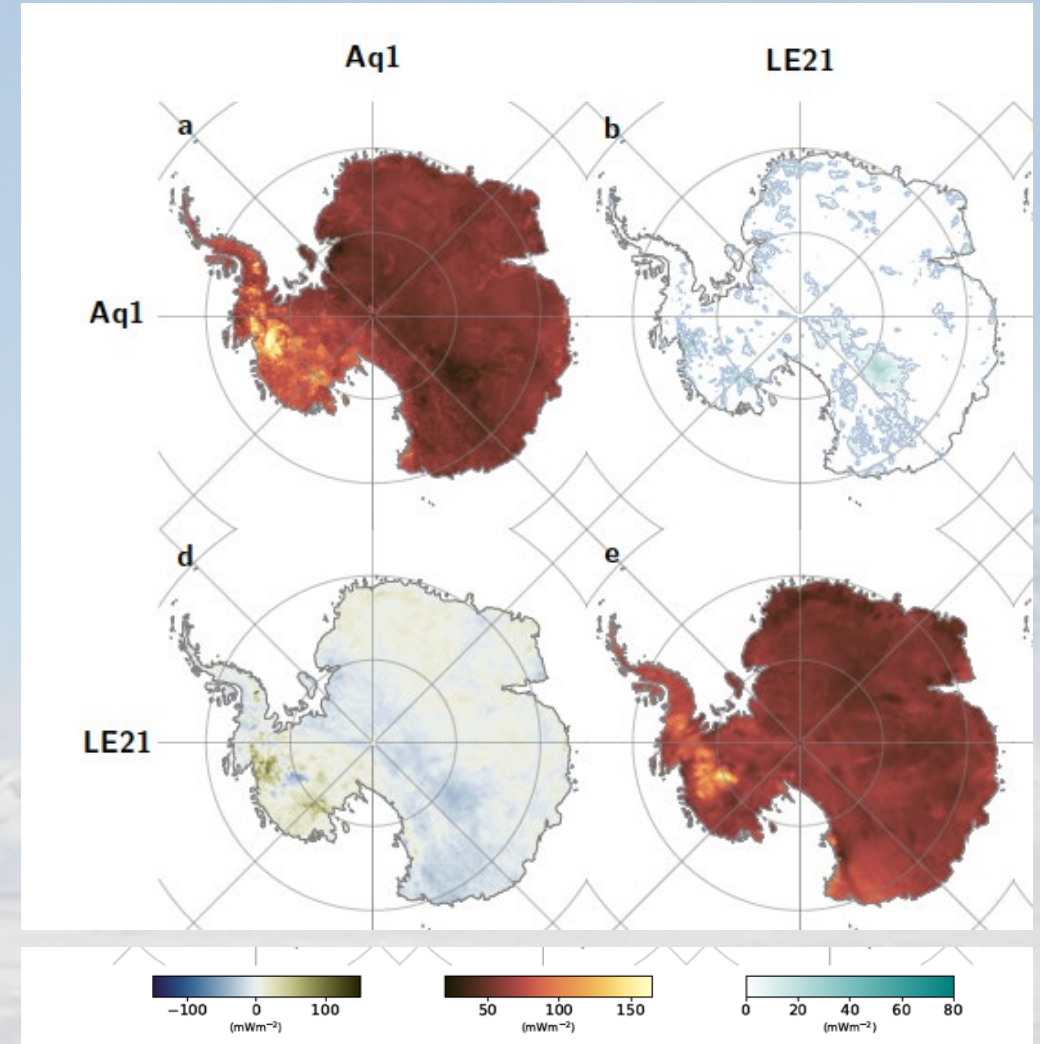
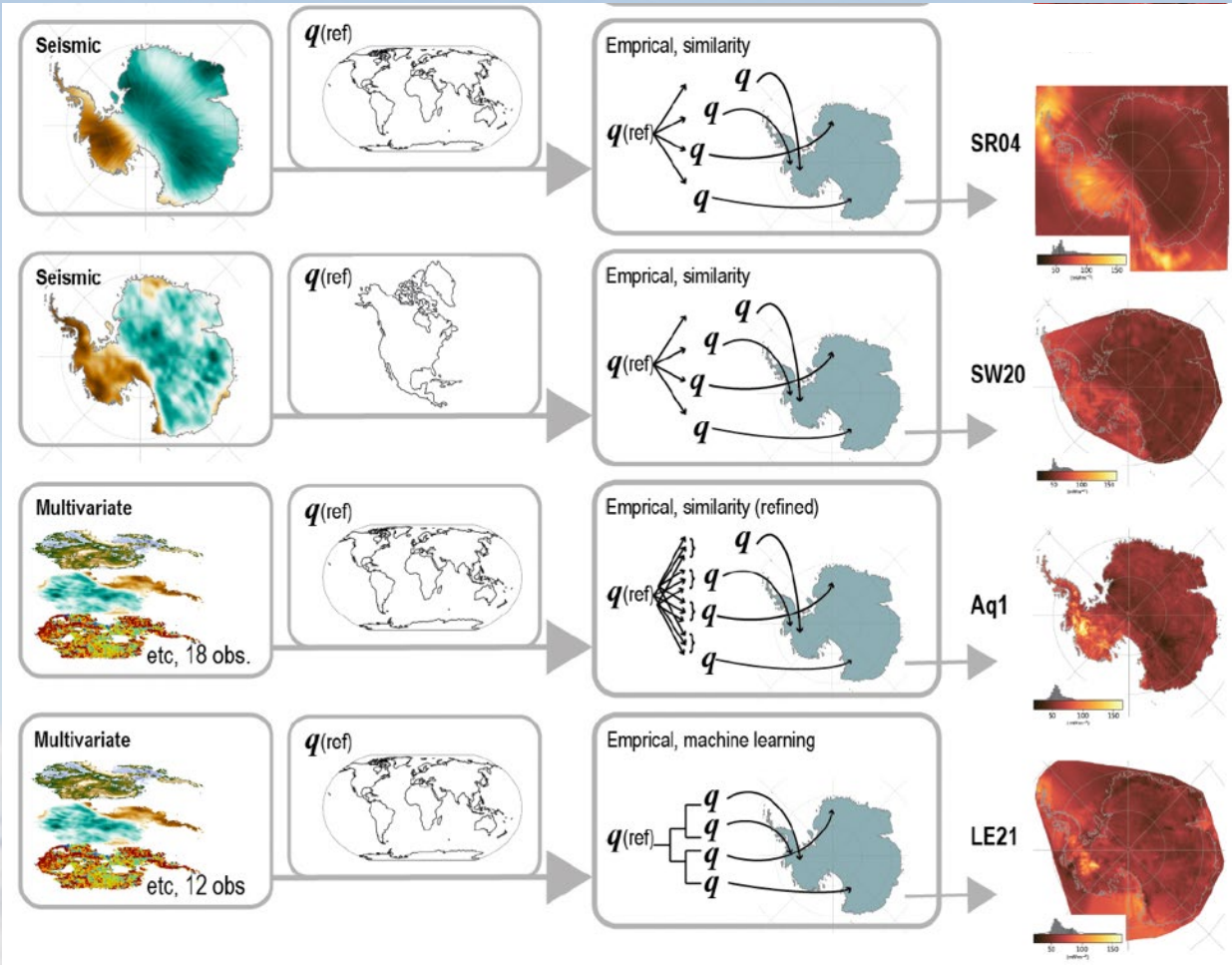
2 – Short presentations and open discussion

- Innovation in Lithosphere (and related) Research → Application to Antarctica
- Updates on Field Campaigns in East Antarctica

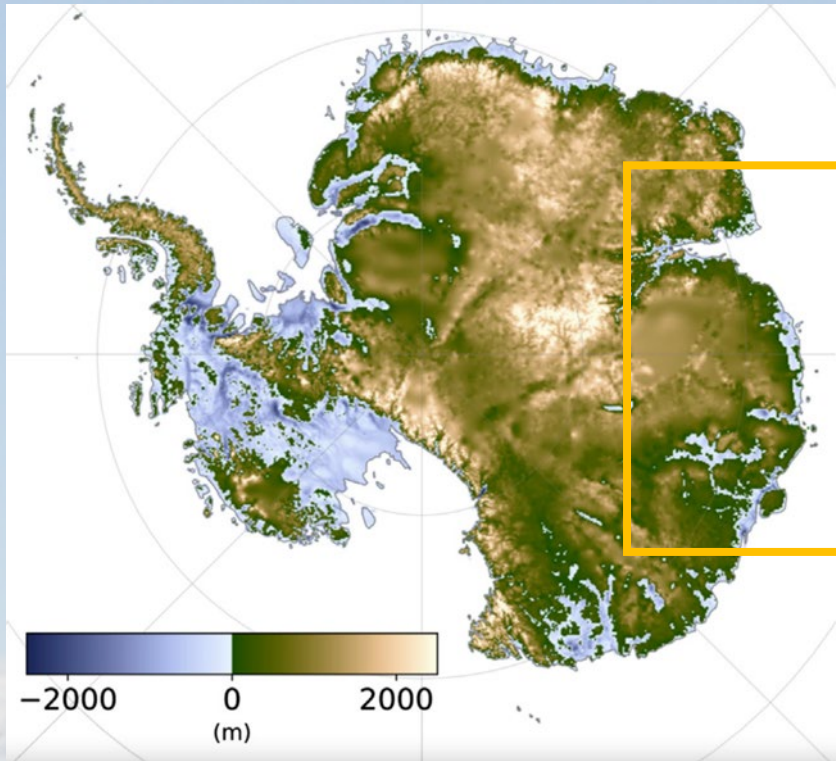
3 – Introduction to asynchronous discussion

- How to contribute going forward

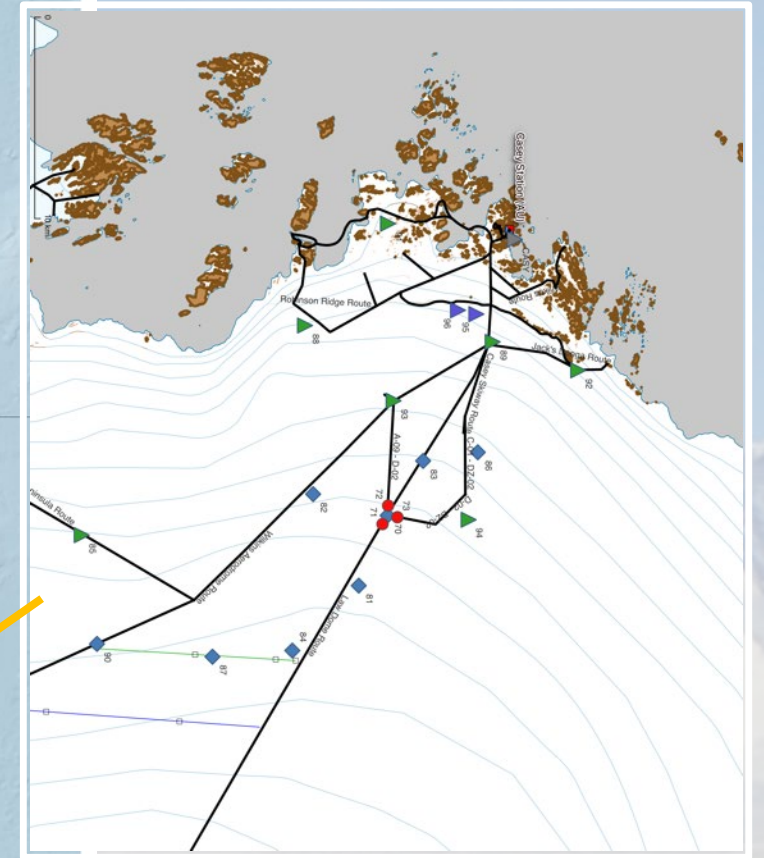
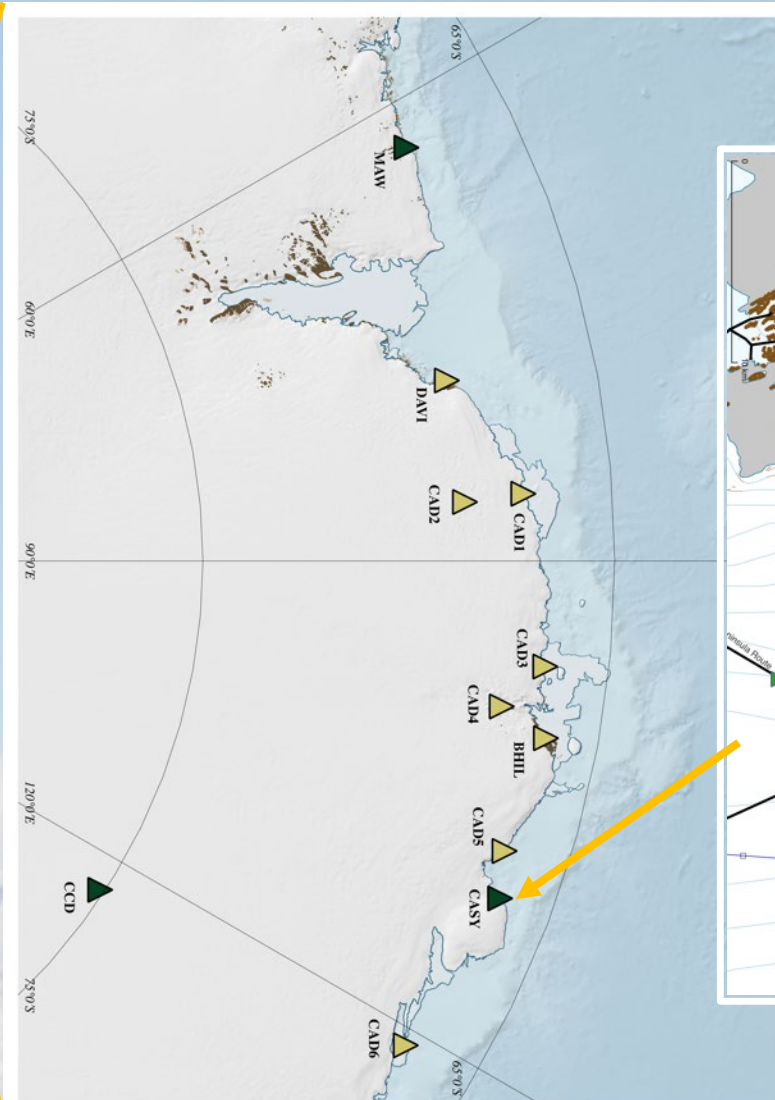
Innovations in Lithosphere Research → Application to Antarctica



Updates on Field Campaigns, 22-23 Summer Season



Stål et al., *Frontiers ES*, 2021



EGU Splinter Meeting + Asynchronous Discussion

ILP Coordinating Committee for East Antarctica

SPM5 Thu, 27 Apr, 12:45-13:45 Rm 2.61

1 – Welcome and Overview

2 – Short presentations and open discussion

- Innovation in Lithosphere (and related) Research
→ Application to Antarctica
- Updates on Field Campaigns in East Antarctica

3 – Introduction to asynchronous discussion

- How to contribute going forward

