

ANATOLIAN TECTONICS

ANATEC (ILP-2022)

Oğuz H Göğüş
(*Istanbul Technical University*)



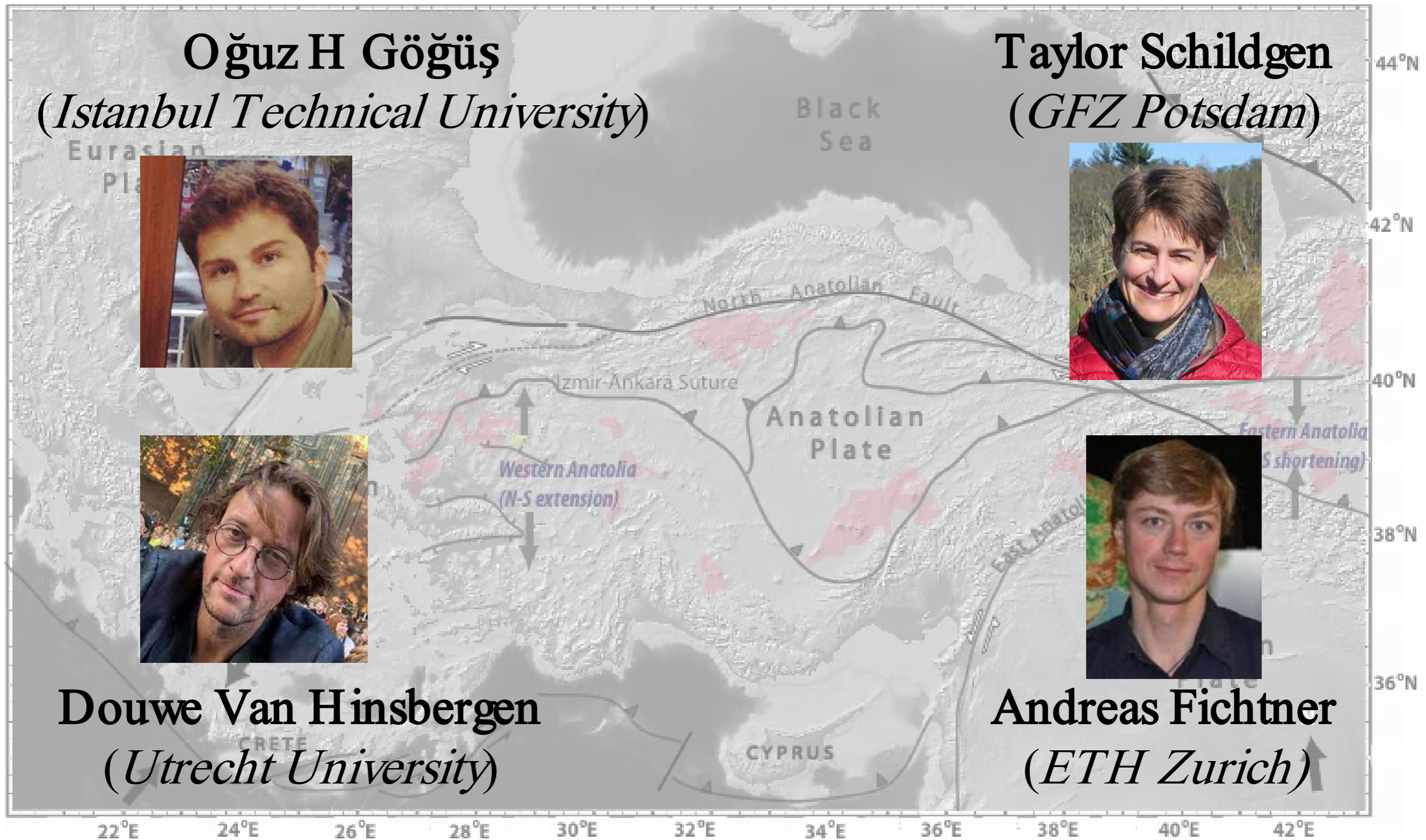
Taylor Schildgen
(*GFZ Potsdam*)



Douwe Van Hinsbergen
(*Utrecht University*)



Andreas Fichtner
(*ETH Zurich*)





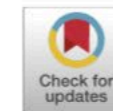
Contents lists available at [ScienceDirect](https://www.sciencedirect.com)

Gondwana Research

journal homepage: www.elsevier.com/locate/gr



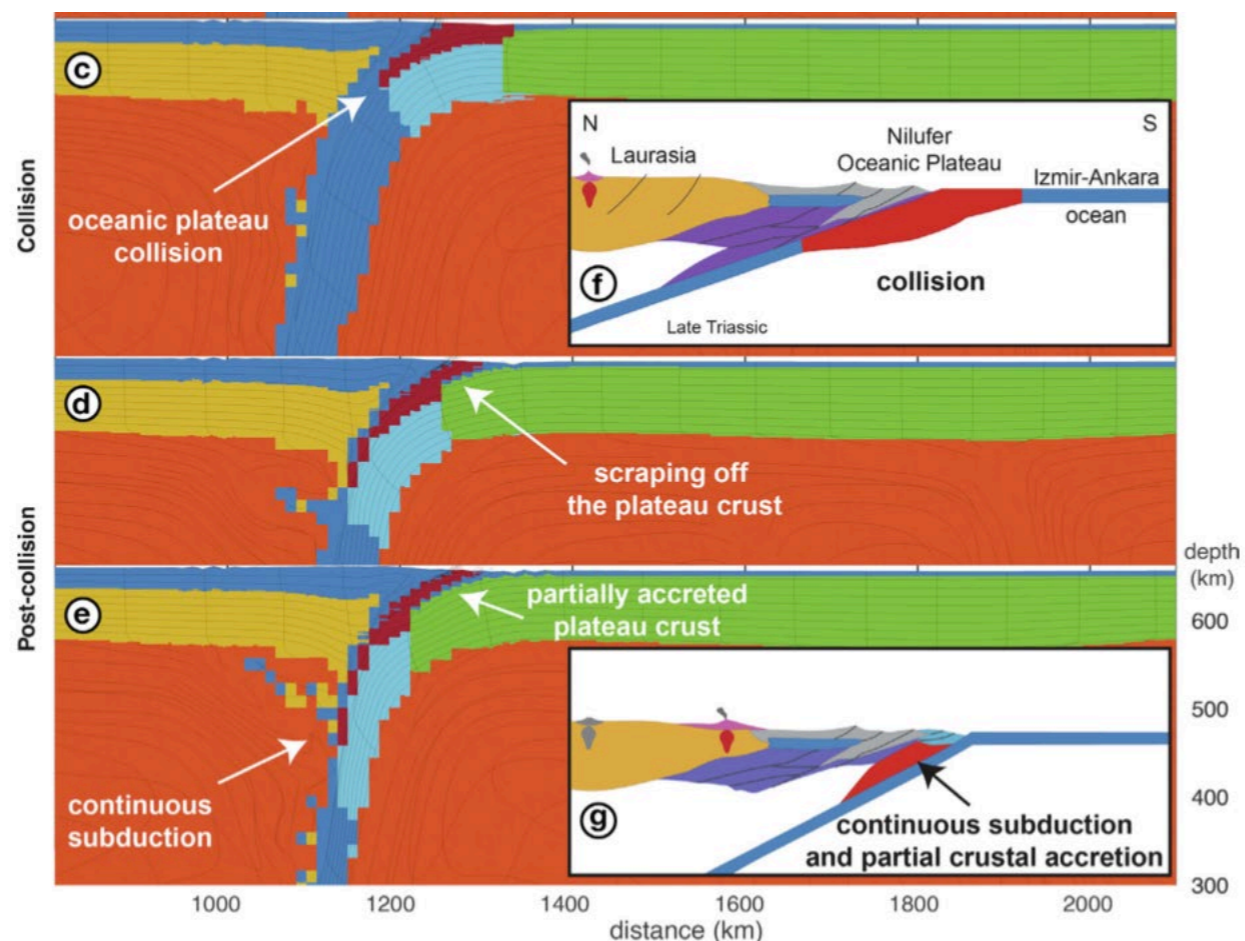
Terrane geodynamics: Evolution on the subduction conveyor from pre-collision to post-collision and implications on Tethyan orogeny



Erkan Gün^{a,*}, Russell N. Pysklywec^a, Oğuz H. Göğüş^b, Gültekin Topuz^b

^a Department of Earth Sciences, University of Toronto, 22 Ursula Franklin St, M5S 3B1 Toronto, Ontario, Canada

^b Eurasia Institute of Earth Sciences, Istanbul Technical University, Ayazaga Kampusu, 34469 Maslak, Istanbul, Turkey



Contributions of Oğuz H Göğüş

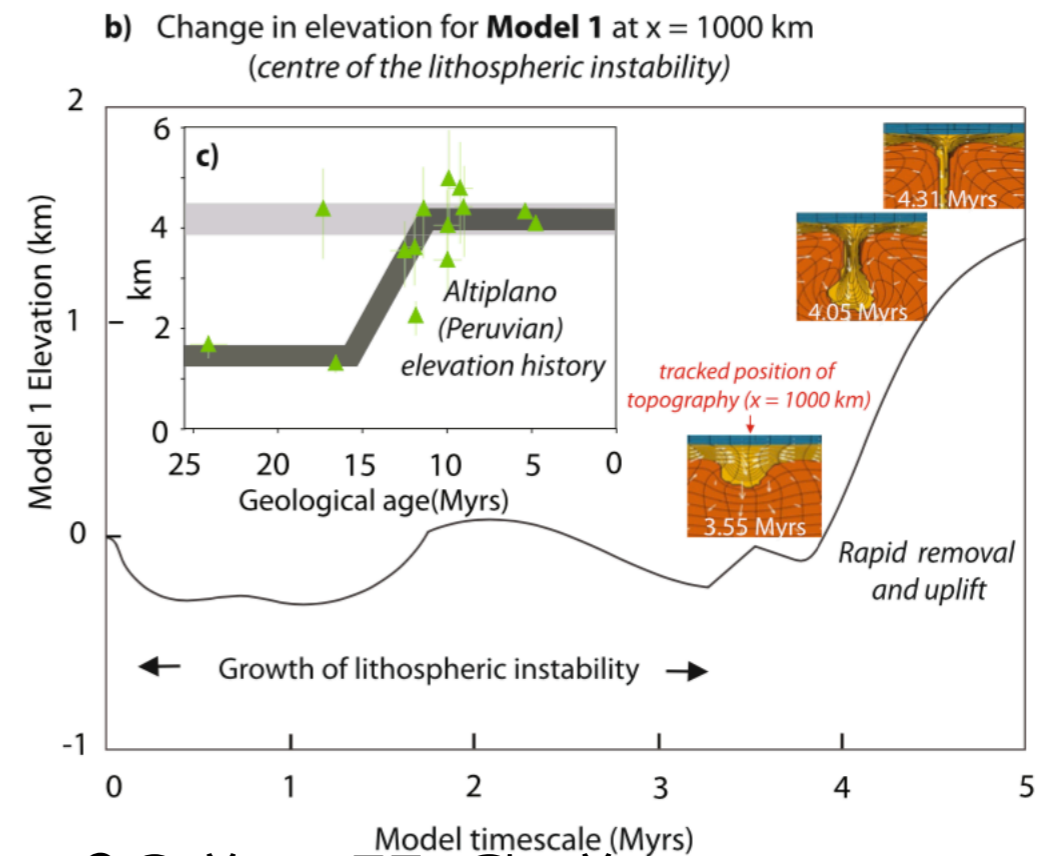
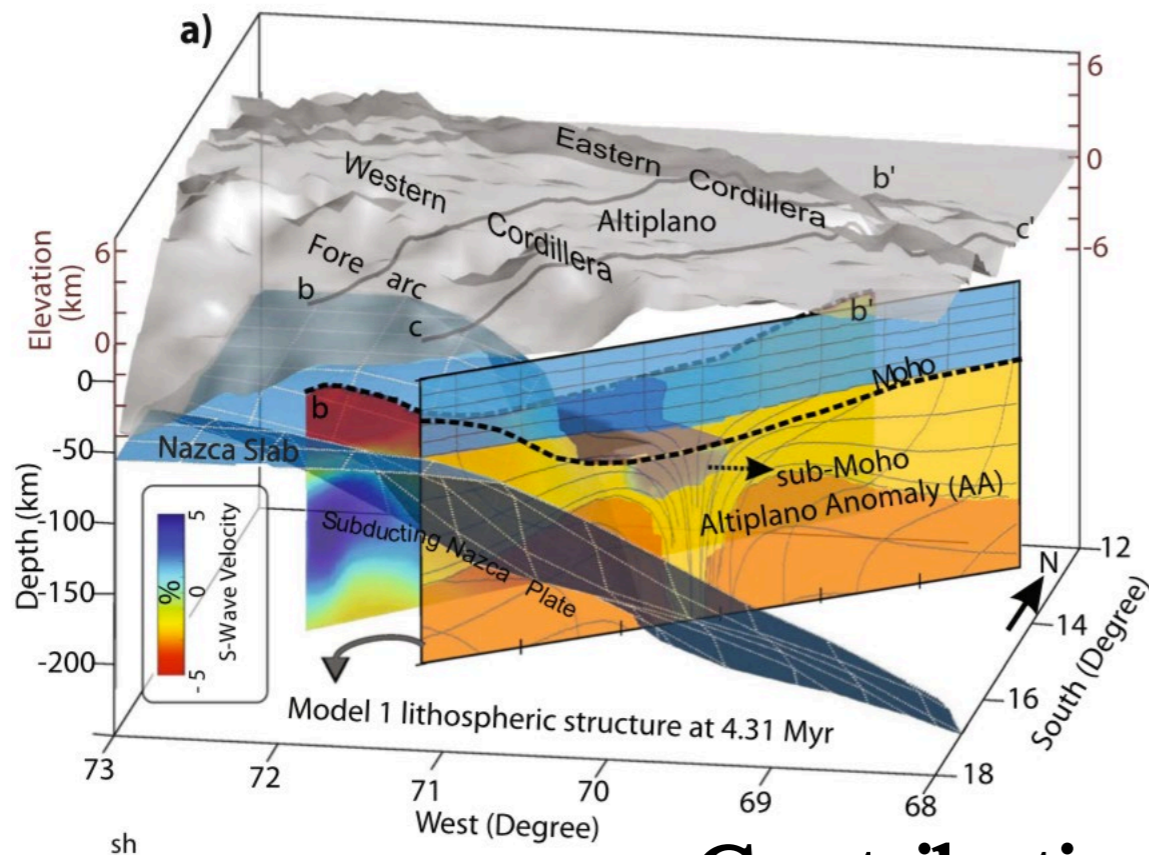
scientific reports

Check for updates

OPEN

Rapid surface uplift and crustal flow in the Central Andes (southern Peru) controlled by lithospheric drip dynamics

Oğuz H. Göğüş¹✉, Kurt Sundell², Ebru Sengül Uluocak³, Joel Saylor⁴ & Uğurcan Cetiner¹



Contributions of Oğuz H Göğüş

communications

earth & environment

ARTICLE

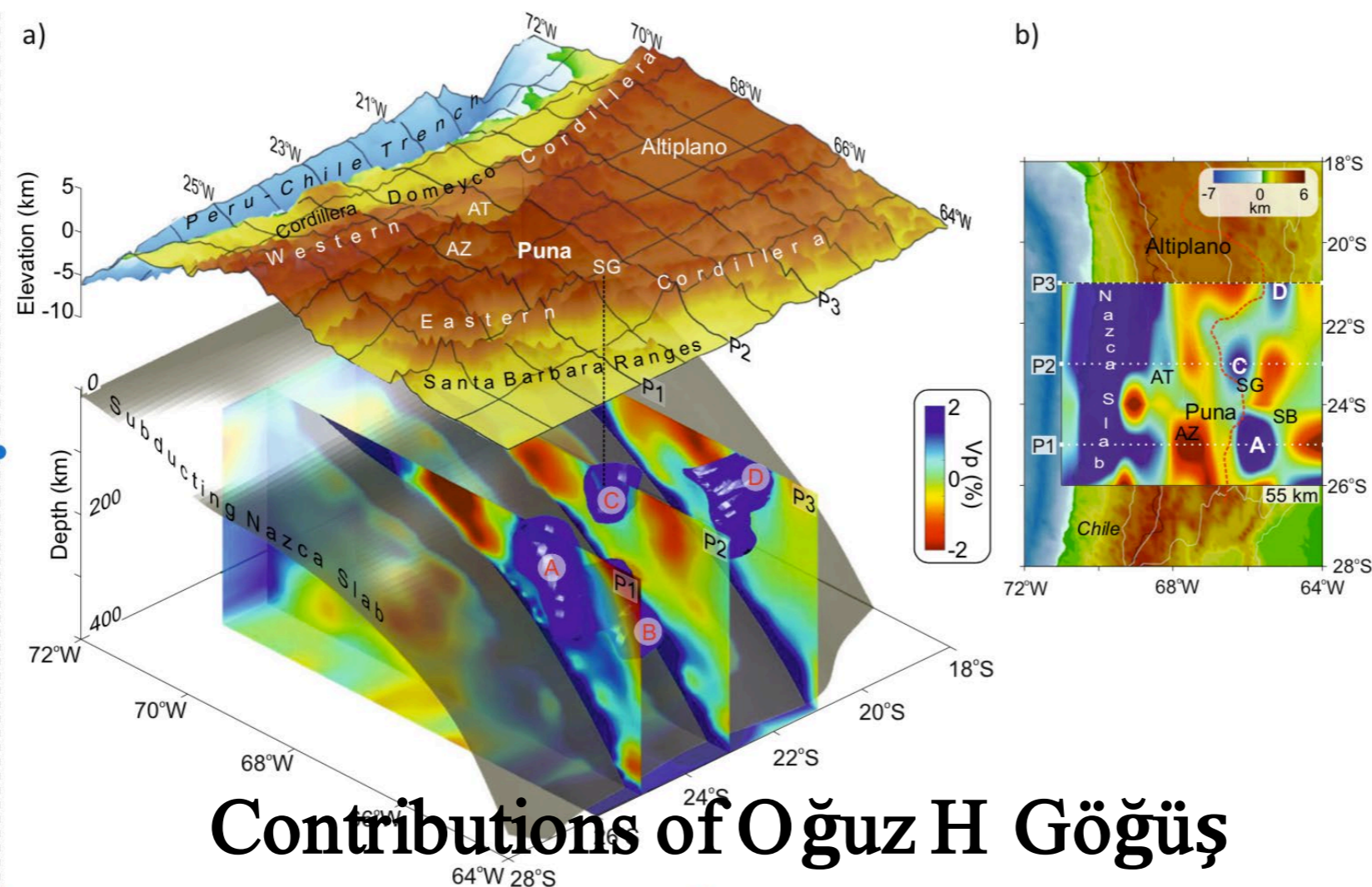


<https://doi.org/10.1038/s43247-022-00470-1>

OPEN

Symptomatic lithospheric drips triggering fast topographic rise and crustal deformation in the Central Andes

Julia Andersen¹, Oguz H. Göğüş², Russell N. Pysklywec¹, Tasca Santimano¹ & Ebru Şengül Uluocak³



Contributions of Oğuz H Göğüş



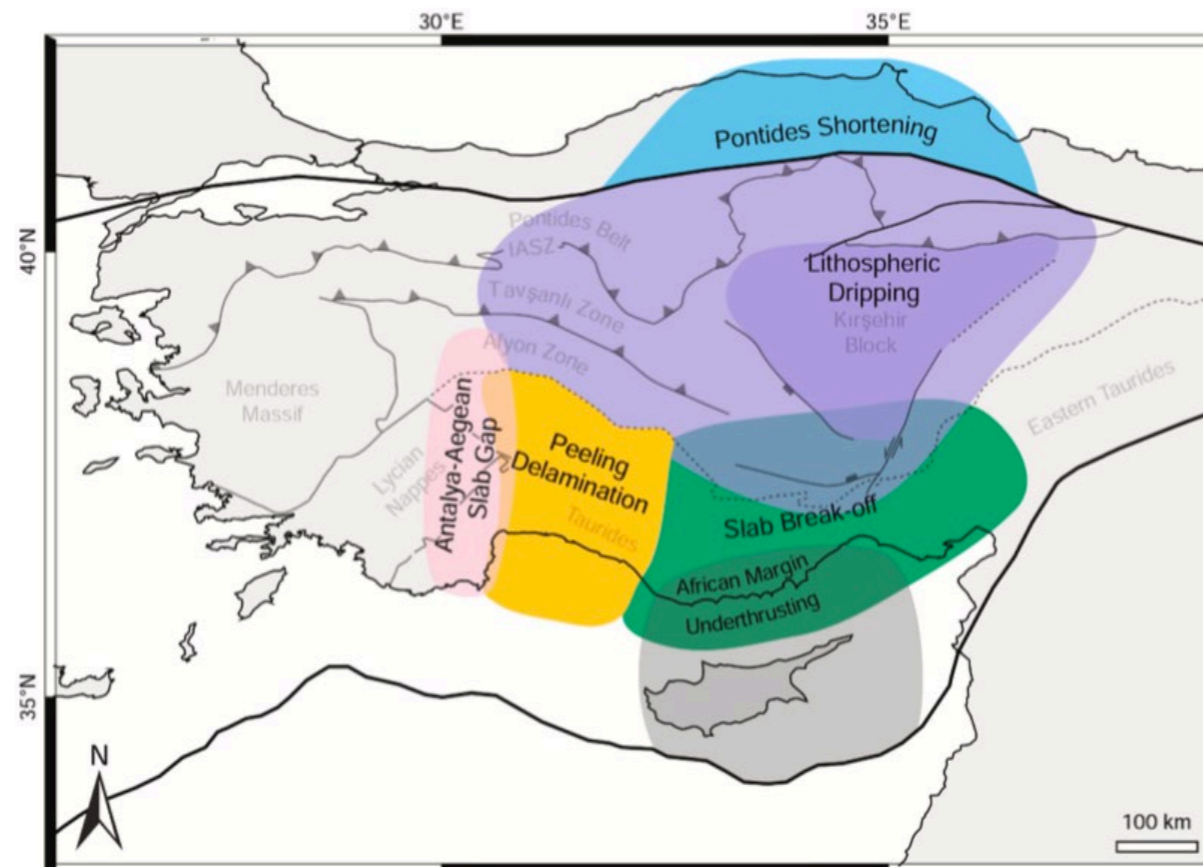
Preparing the ground for plateau growth: Late Neogene Central Anatolian uplift in the context of orogenic and geodynamic evolution since the Cretaceous

Peter J. McPhee^{a,c,*}, Ayten Koç^b, Douwe J.J. van Hinsbergen^a

^a Department of Earth Sciences, Utrecht University, Utrecht, the Netherlands

^b Department of Geological Engineering, Van Yüzüncü Yıl University, Van, Turkey

^c Institute of Geological Sciences, Freie Universität Berlin, Berlin, Germany



Contributions of Douwe Van Hinsbergen

ANATOLIAN TECTONICS ANATEC (ILP)

PLAN for 2024:
ANATEC
meeting to
bring different
viewpoints

